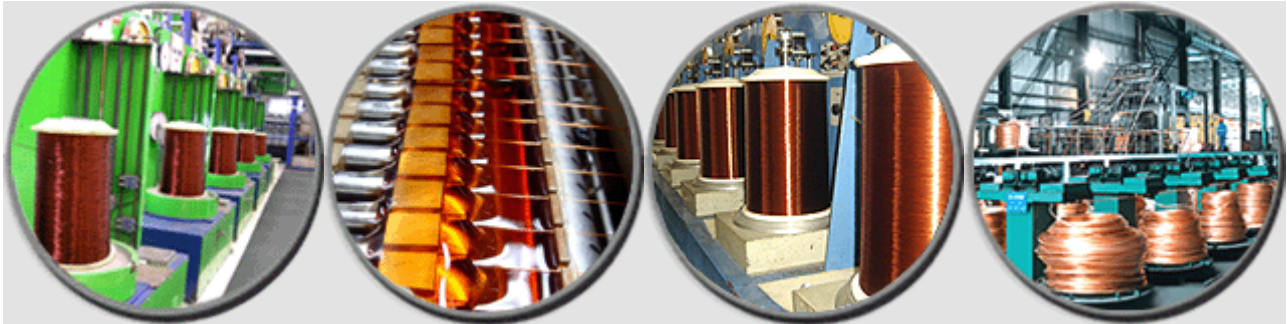




CUTES Enameled Copper Wire

Enameled Copper Wire





CUTES Enameled Copper Wire

ENAMEL TYPES

We produce a range of types enameled copper wires, from class B 130°C to class C 200°C, as follow:

Abbr.	Coating		Temperature Index	Executive Standards	Diameters Available
	Base Coating	Over coating	Thermal Class		
UEW/130 PUR/130	Polyurethane		130°C (B class)	IEC60317-4 MW 75-C JIS C 3202.6	0.03mm-1.40mm
UEW/155 PUR/155			155°C (F class)	IEC60317-20 MW 79-C JIS C 3202.7	0.03mm-1.40mm
UEW/130 PUR/130			180°C (H class)	IEC60317-51 MW 82-C JIS C 3202.6	0.03mm-1.40mm
EIW/180 PEI/180	Polyester-imide		180°C (H class)	IEC60317-8 MW 30-C 65 JIS C 3202.8	0.08mm-3.20mm
EI/AIW/200 PEI/AI/200	Polyesterimide	Polyimide- amide	200°C (C class)	IEC60317-13 MW 35-C MW 73-C	0.30mm-3.20mm
PEW/130	Polyester		130°C (B class)	IEC60317-34 JIS C 3202.5	0.08mm-3.20mm
PEW/155	Modified Polyester		155°C (F class)	IEC60317-3 MW 5-C JIS C 3202.5	0.08mm-3.20mm
UEW/N/130	Polyurethane	polyamide	130°C (B class)	IEC60317-19 MW 28-C	0.03mm-1.40mm
UEW/N/155			155°C (F class)	IEC60317-21 MW 80-C	0.03mm-1.40mm
UEW/N/180			180°C (H class)	IEC60317-51 MW 83-C	0.03mm-1.40mm
EIW/N/180	Polyester-imide	polyamide	180°C (H class)	IEC60317-22 MW 76-C	0.08mm-3.20mm
PEW/N/155	Modified Polyester	polyamide	155°C (F class)	MW 24-C	0.08mm-3.20mm
PEW/N/130	Polyester	polyamide	130°C (B class)		0.08mm-3.20mm



CUTES Enameled Copper Wire

PROPERTIES AND APPLICATION

Abbr.	Properties	Application
UEW/130 PUR/130	Very good solder ability and thermal properties.	Used in transformers, linear motors, relays, solenoids, small motors, clock coils, watch coils, fly-back transformers, magnetic heads, instruments
UEW/155 PUR/155	Very good solder ability and higher thermal properties than 130 °C .	Used in transformers, linear motors, relays, solenoids, small motors, clock coils, watch coils, fly-back transformers, magnetic heads, instruments
UEW/130 PUR/132	Good solder ability at 370 o C and elevated thermal values	Used for automotive coils as relays and ignition coils, in transformers and in solenoids
EIW/180 PEI/180	High thermal properties and good chemical resistance.	Used in motors, transformers.
EI/AIW/200 PEI/AI/200	Very high thermal properties and high mechanical resistance	Used in motors, compressors
PEW/130	Good mechanic and chemical properties	Used in Motors for Fans, washing machines
PEW/155	Improved mechanic, chemical and thermal performance in comparison to Polyester enameled copper wires	Used in various motors
UEW/N/130	The polyamide over coated wires demonstrate the same properties as the above wires without polyamide coating. What's more, because of the polyamide coating, these wires' mechanic properties are improved greatly.	Used in such cases where fast winding is needed.
UEW/N/155		
UEW/N/180		
EIW/N/180		
PEW/N/155		
PEW/N/130		



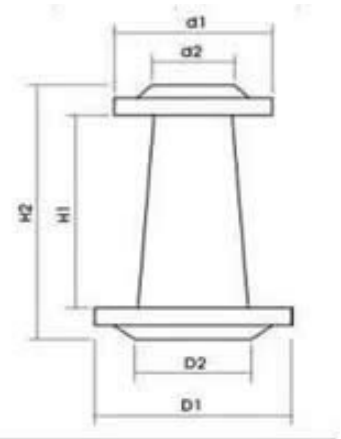
CUTES Enameled Copper Wire

PACKING INFO

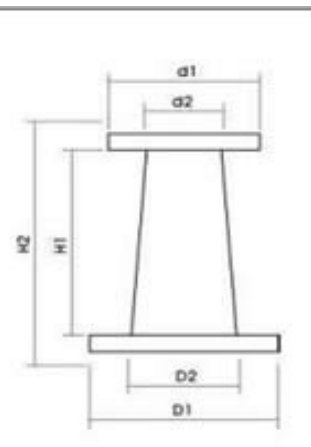
Spool Type	Sizes Applicable	Net Weight of Spool	Approximate Weight of Wires Applicable	Spools per Carton
	(mm)	(Kg)	(Kg)	
PL-2S	Ø0.020-0.050	0.13	1.2	16
PT-2	Ø0.020-0.050	0.17	2	12
PT-4	Ø0.050-0.30	0.3	4.5	4
PT-10	Ø0.10 - 0.30	0.62	12	2
PT-15	Ø0.30 - 0.56	0.74	18	1
PT-25	Ø0.50 - 2.36	1	28	1
PT-45	Ø0.36 - 3.20	2.15	45	-
PT-60	Ø0.36 - 3.20	2.25	60	-
PT-90	Ø0.50 - 3.20	3.9	90	-
PT-200	Ø0.50 - 3.20	7.3	200	-
PC220*110	Ø0.50 - 2.36	1	28	-
PC355*180	Ø2.00 - 3.20	60	60	-

SPOOL INFO

TYPE	REEL WEIGHT (GRAM)	STANDARD WEIGHT WITH WIRE (KG)	MEASUREMENT					
			d1	d2	D1	D2	H1	H2
PT-45 PCZ-250	2150	45	236	140	250	160	335	400
PT-90 PCZ-315	3900	90	300	180	315	200	425	500
PT-200 PCZ-400	7300	200	375	225	400	250	530	630
PT-270	10500	270	435	225	460	280	528	628



TYPE	REEL WEIGHT (GRAM)	STANDARD WEIGHT WITH WIRE (KG)	MEASUREMENT					
			d1	d2	D1	D2	H1	H2
PT-4	240	4	124	74	140	86	170	200
PT-10	620	10	160	96	180	110	200	230
PT-15	740	15	180	96	200	110	200	230
PT-25	1000	25	215	110	230	130	250	280
PT-60	2250	60	269	150	296	178	350	400





CUTES Enameled Copper Wire

GAUGE REFERENCE

Gauge No.	SWG		AWG	
	mm	inch	mm	inch
50	0.0254	0.001	0.0252	0.00099
49	0.0305	0.0012	0.0282	0.00111
48	0.0406	0.0016	0.0315	0.00124
47	0.0508	0.002	0.0356	0.0014
46	0.061	0.0024	0.0399	0.00157
45	0.0711	0.0028	0.0447	0.00176
44	0.0813	0.0032	0.0508	0.00198
43	0.0914	0.0036	0.0559	0.00222
42	0.102	0.004	0.0635	0.00249
41	0.112	0.0044	0.0711	0.0028
40	0.122	0.0048	0.0787	0.00314
39	0.132	0.0052	0.0889	0.00353
38	0.152	0.006	0.102	0.00396
37	0.173	0.0068	0.114	0.00445
36	0.193	0.0076	0.127	0.005
35	0.213	0.0084	0.142	0.00561
34	0.234	0.0092	0.16	0.0063
33	0.254	0.01	0.18	0.00708
32	0.274	0.0108	0.203	0.00795
31	0.295	0.0116	0.226	0.00893
30	0.315	0.0124	0.254	0.01
29	0.345	0.0136	0.287	0.0112
28	0.376	0.0148	0.32	0.0126
27	0.417	0.0164	0.361	0.0142
26	0.457	0.018	0.404	0.0159
25	0.508	0.02	0.455	0.0179
24	0.559	0.022	0.511	0.0201
23	0.61	0.024	0.574	0.0226
22	0.711	0.028	0.643	0.0253
21	0.813	0.032	0.724	0.0285
20	0.914	0.036	0.813	0.032
19	1.016	0.04	0.912	0.0359
18	1.219	0.048	1.024	0.04
17	1.422	0.056	1.151	0.045
16	1.626	0.064	1.29	0.051
15	1.829	0.072	1.45	0.057
14	2.032	0.08	1.629	0.064
13	2.337	0.092	1.829	0.072
12	2.642	0.104	2.052	0.081
11	2.946	0.116	2.304	0.091
10	3.251	0.128	2.588	0.102
9	3.658	0.144	2.906	0.114
8	4.064	0.16	3.264	0.128
7	4.45	0.176	3.665	0.144
6	4.877	0.192	4.115	0.162